



Wireless LAN Guide



**Hamburg Messe
und Congress**



Contents:

1. General information	2
1.1 General information	2
1.2 Technical requirements for the user's end device	4
1.3 Locations with wireless LAN availability	4
2. Information about payment and billing options	5
2.1 Invoice via email	5
2.2 Purchasing access data	6
2.2.1 Access data with a voucher	6
2.2.2 Paying with credit card	7
2.2.3 Paying via online banking "giropay"	8
2.3 Profiles and costs	9
2.4 Validity period of access data	9
3. Technical information and details	11
3.1 SSID (network name) for wireless LAN	11
3.2 Wireless LAN standards	11
3.3 Security of the wireless LAN connection	11
3.4 Range of coverage for hotspots (Access Points)	11
3.5 Transfer rate	11
3.6 Creating a wireless LAN connection	12
3.7 Automatic Log-Off	14



1. General information

1.1 General information

Since 2011, the Hamburg Messe und Congress (HMC) has offered you the opportunity to use a wireless LAN Internet connection. You can choose from various profiles (hour ticket or day ticket) and payment methods. Once you have made a connection to our wireless LAN, you will automatically be routed with your standard Web browser to the wireless LAN portal.



Figure 1: Homepage for the HMC wireless LAN portal

On the homepage for the wireless LAN portal, you will have the chance to:

- connect to the Internet by entering a valid voucher code
- purchase access to the Internet via a click on "without voucher code"
- use free websites without registering in advance



Hamburg Messe und Congress

With voucher code Menu >>

The homepage for Hamburg Messe und Congress Wireless LAN offers you the following options:

- You can access [general information](#) centred round your trade fair and conference visit free of charge
- You can surf the Internet directly with a voucher code
- You can purchase a voucher code [here](#), in the event that you do not have one

Enter your voucher code:

Yes, I agree to the following conditions:
Of course, I understand that I must adhere to all laws during use of the connection. The running of a server or the offer to provide computer services via HMC's wireless LAN access is not permissible. I relinquish HMC from all third-party claims which may arise as a result of a breach of these user conditions. HMC's standard [Terms and Conditions](#) for Internet use apply.

Please contact the person who provided you with the voucher to find out how long the voucher code is valid for.

[Imprint](#) [Terms and Conditions](#) [Privacy Policy](#) [Download Instructions](#) [German version](#) [Free of charge on our website](#)

Figure 2: Log-In without a voucher code

Purchase a voucher for the Hamburg Messe und Congress Wireless LAN here!

How long would you like to be online?
For an hour or a day? Select the perfect rate for your needs and simply pay by credit or debit card.

<input type="radio"/>	1 hour Internet access,	1 MBit/s,	50 MB Download,	5 EUR
<input type="radio"/>	1 day Internet access,	4 MBit/s,	200MB Download,	25 EUR
<input type="radio"/>	1 day Internet access,	4 MBit/s,	1000MB Download,	75 EUR

Please send me an invoice

Figure 3: Log-In with a voucher code



1.2. Technical requirements for the user's end device

You need a wireless LAN-capable end device, using the standard 802.11 a/b/g/n, and a Web browser (e.g. Internet Explorer, Safari, Firefox or Opera). The end device's wireless adaptor has to be activated.

1.3. Locations with wireless LAN availability

The following areas at the Hamburg Messe und Congress GmbH provide access to our wireless LAN:

Exhibition Halls: Halls A1 to A4, B1 to B7, the conference areas (Petersburg, Shanghai, Osaka, Prag, Chicago, Kopenhagen, Marseille) and the entrances (East, South, Central, West)

CCH-Congress Center Hamburg: Hall H, the entrance hall, the foyer, the foyer on the 2nd floor, the foyer on the 1st floor, Conference Room 3, the tier foyer and the between-floors foyer on the 3rd floor



2. Information about payment and billing options

2.1 Invoice via e-mail

When choosing the rate you have the possibility to order an invoice by e-mail. If you do so, you will be asked for your invoice details in the next step. If you do not require an invoice you will be asked to choose the payment method directly.

Invoice details

Please enter following information

First name:*

Last name:*

E-mail:*

Confirm email:*

Company:

Address:

City:

Country:

VAT:

Figure 4: Fill in your invoice details



2.2 Purchasing access data

Your payment

Merchant: Hamburg Messe u. Congress GmbH
Offer: HMC Internetvoucher EUR 5.00

Please select your preferred payment means:

Pay per credit card

VISA MasterCard

Pay using online banking

giro pay

[Quit](#) [Next](#)

Encrypted transmission

© 2011 CIX CARD SOLUTIONS

Figure 5: Payment options for our wireless LAN

2.2.1 Access data with a voucher

If you already hold a voucher, you can directly enter the access code on the wireless LAN portal's homepage:

here for a fee.'"/>

Enter your voucher code: >>

If you do not have a voucher code, you can purchase one [here](#) for a fee.

Figure 6: Field for entering the voucher code

You can find out the validity period of your voucher code from the person who issued you the voucher.



2.2.2 Paying with credit card

You can purchase access data with your credit card (MasterCard or VISA). You will receive the voucher code once payment has been successfully made.

Click on "To the registration site" in the portal and choose the profile that meets your needs. The payment page will appear, where you can pay with VISA or MasterCard.

Please select the type of credit card:

Your payment
Merchant: Hamburg Messe u. Congress GmbH
Offer: HMC Internetvoucher

Please select your preferred payment means:
Pay per credit card

VISA MasterCard

Figure 7: Select the type of credit card

Please enter the necessary information for fields marked with an asterisk (*).

Payment means Card data Confirmation

Your payment
Merchant: Hamburg Messe u. Congress GmbH
Offer: HMC Internetvoucher EUR 5.00

Card data

Card number * 132xxxx
Valid until * 12 2016
Card verification code * 123
Cardholder's name * Max Mustermann

* mandatory fields

Back Quit Pay

Figure 8: Enter the credit card data

Then click on "Pay" and, once the transaction has been successfully checked by our payment service provider, you will receive your voucher code with which you can log in on the portal site. We recommend that you write down the access code for future use.



2.2.3 Paying via online banking “giropay”

Alternatively, you can purchase access data via online banking. You will receive the voucher code once payment has been successfully made.

Click on “To the registration site” in the portal and choose the profile that meets your needs. The payment page will appear, where you can pay via online banking.



Figure 9: Select method of payment “giropay”

Payment means	Payment	Confirmation
Your payment		
Merchant: Hamburg Messe u. Congress GmbH		
Offer: HMC Internetvoucher		EUR 5.00
Purchase		
Make the payment transfer with giropay rapidly, easily and conveniently. You will be routed to the your bank's online banking website. Please enter your bank reference:		
Bank routing number *	<input type="text" value="120xxxxx"/>	<input type="button" value="search"/>
Account number *	<input type="text" value="123xxxxx"/>	
Account holder's name (optional)	<input type="text" value="Max Mustermann"/>	
* mandatory fields		

Figure 10: Page for entering your “giropay” bank data

By clicking on “Continue”, you will be routed to the giropay site from your main bank. Once here, please confirm the payment using a valid TAN. You will receive your voucher code for accessing the Internet upon successful payment and approval by your bank. We recommend that you write down the access code for future use.



2.3 Profiles and costs

The current prices and user profiles can be found on the payment page of our wireless LAN portal.

Purchase a voucher for the Hamburg Messe und Congress Wireless LAN here!

How long would you like to be online?
For an hour or a day? Select the perfect rate for your needs and simply pay by credit or debit card.

<input type="radio"/>	1 hour Internet access,	1 MBit/s,	50 MB Download,	5 EUR
<input type="radio"/>	1 day Internet access,	4 MBit/s,	200MB Download,	25 EUR
<input type="radio"/>	1 day Internet access,	4 MBit/s,	1000MB Download,	75 EUR

Please send me an invoice

[Register](#)

Figure 11

2.4 Validity period of access data

The validity period for the various profiles can be found on the current rate options and technical data sites (see Figure 11).



1-hour plan:

- According to the stop-watch principle, ends the latest at midnight
- Performance: transfer rate of 1 Mbps, max. 50 MB download size (shared)
- Ideal for: briefly checking information, retrieving specific information

1-day plan:

- From the time of registration to midnight of that day at the latest
- Performance: transfer rate of 4 Mbps, max. 200 MB download size (shared)

1-day plan: 75.00 EUR

- From the time of registration to midnight of that day at the latest
- Range of services: bandwidth 4 Mbit/s (shared)
- Performance: transfer rate of 4 Mbps, max. 1,000 MB download size

Please also notice point 3.7 „Automatic Log-Off“



3. Technical information and details

3.1 SSID (network name) for wireless LAN

The SSID for wireless LAN at the Hamburg Messe und Congress GmbH is:
_WIFI_HamburgMesseCongress

3.2 Wireless LAN standards

The wireless LAN technology which we employ conforms to the 802.11 a/b/g/n draft standard.

3.3 Security of the wireless LAN connection

The wireless LAN connection at HMC is publically accessible. For your security, your log-in data and credit card information/bank information is SSL encrypted.

3.4 Range of coverage for hotspots (Access Points)

The coverage of hotspots ranges from 50 to 70 metres.

3.5 Transfer rate

The wireless LAN connection at HMC is a shared medium whose real transfer rate depends on the number of users. Uploading of data and point-to-point connections are not possible.



3.6 Creating a wireless LAN connection

Within your wireless network environment, please select the network with the name (SSID) _WIFI_HamburgMesseCongress. As soon as you have a connection to the network, open your browser and any website, e.g. www.google.com. You will automatically be routed to our wireless LAN portal.

3.6.1 The wireless LAN cannot be connected to a VPN.

When using a company notebook, please ensure that the pre-set proxy server is deactivated. To do this in Internet Explorer, go to Extras -> Internet Options -> Connections and click on "LAN settings", then remove the tick from the proxy server box.



Figure 12: Local network



Taking Windows® XP as an example, the connection can be created as follows:

Under Start → Settings → Network connections, you can check the status of the wireless network connection.



Figure 13: Network status

Double click on “Wireless network connections”. Now all of the available wireless networks within your end device’s range of coverage are shown.

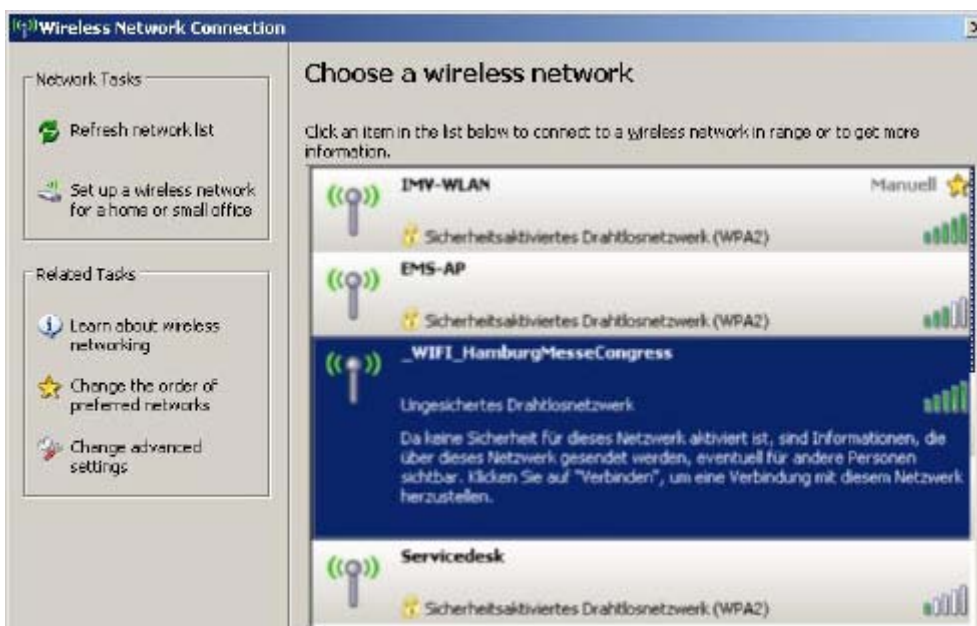


Figure 14: Wireless network



Double click on `_WIFI_HamburgMesseCongress` to create a wireless LAN connection.

After you have made a connection to the network `_WIFI_HamburgMesseCongress`, please immediately open any Web browser, such as Internet Explorer, Firefox or Opera. You will automatically be routed to the portal homepage (see also Figure 1: Homepage for the HMC wireless LAN portal) of the wireless LAN connection at the Hamburg Messe und Congress.

3.7 Automatic Log-Off

The time you have left will be updated regularly in a pop-up window. In order to find out how much download capacity you have left, please log off the W-LAN and then log back in.

When you have used up your voucher (time or download capacity) you will get a message that says: "Your account has expired!"

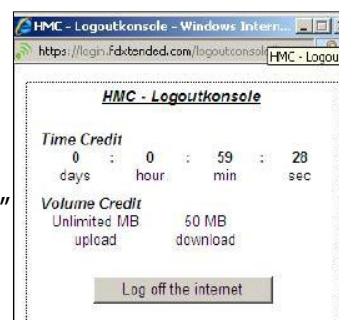


Figure 15: Time and volume credit pop-up window